

TWENTY27

sample

# Rural BRITAIN

*Sublime landscapes and wild creatures*





**REFLECTIONS OF LAKE SHORE AND CRAGGY FELS**  
**Blea Tarn, Lake District and Heron**

*This beautiful, remote tarn, shaped by glacial ice lies in a hanging valley between Great and Little Langdale amid the sublime backdrop of the Langdale Pikes, beside a small woodland plantation with rhododendrons along its western shore. The name 'blea' simply means blue. The heron, an inhabitant of shallow lakes, ponds, rivers, water meadows and estuaries, can be spotted here. It paces slowly through the shallow water, stabbing prey such as small fish and amphibians with its dagger-like beak.*

## January 2027

1	Fri	New Year's Day
2	Sat	
3	Sun	
4	Mon	Bank Holiday (Scotland) Wk 1
5	Tue	
6	Wed	
7	Thu	
8	Fri	
9	Sat	
10	Sun	
11	Mon	Wk 2
12	Tue	
13	Wed	
14	Thu	
15	Fri	
16	Sat	
17	Sun	
18	Mon	Wk 3
19	Tue	
20	Wed	
21	Thu	
22	Fri	
23	Sat	
24	Sun	
25	Mon	Wk 4
26	Tue	
27	Wed	
28	Thu	
29	Fri	
30	Sat	
31	Sun	

## January 2027

wk	Mon	Tue	Wed	Thu	Fri	Sat	Sun
					1	2	3
53							
1	4	5	6	7	8	9	10
2	11	12	13	14	15	16	17
3	18	19	20	21	22	23	24
4	25	26	27	28	29	30	31

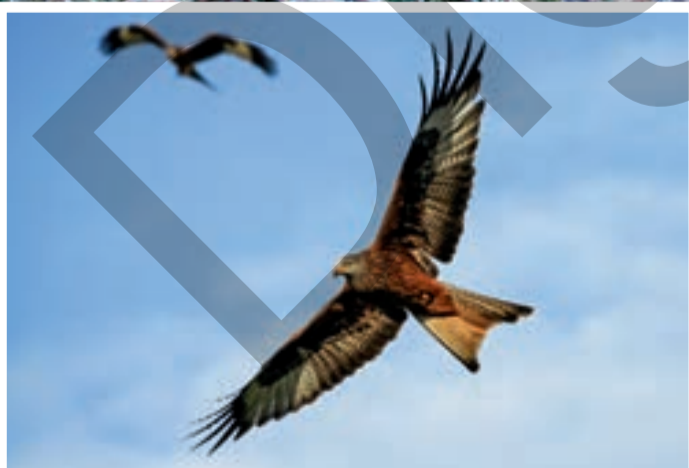
1 New Year's Day 4 Bank Holiday (Scotland)

### December 2026

wk	Mon	Tue	Wed	Thu	Fri	Sat	Sun
49		1	2	3	4	5	6
50	7	8	9	10	11	12	13
51	14	15	16	17	18	19	20
52	21	22	23	24	25	26	27
53	28	29	30	31			

### February 2027

wk	Mon	Tue	Wed	Thu	Fri	Sat	Sun
5	1	2	3	4	5	6	7
6	8	9	10	11	12	13	14
7	15	16	17	18	19	20	21
8	22	23	24	25	26	27	28



**FROSTED ROLLING GRASSLAND**

**Ivinghoe Beacon in the Chilterns and Red Kite**

This hill is the site of an Iron Age hill-fort and a prominent landmark in the Chilterns, with far-reaching views.

Set in an area of wildflower-rich chalk grasslands and ancient woodlands spread across rolling hills, it is part of the NT Ashridge Estate and the start/end of the Ridgeway trail. The red kite is often seen circling overhead.

This graceful bird of prey with its unmistakable reddish-brown body, angled wings and deeply forked tail has now been successfully re-introduced to Britain.

**February 2027**

1	Mon	Bank Holiday (Eire)	Wk 5
2	Tue		
3	Wed		
4	Thu		
5	Fri		
6	Sat		
7	Sun		
8	Mon		Wk 6
9	Tue		
10	Wed		
11	Thu		
12	Fri		
13	Sat		
14	Sun		
15	Mon		Wk 7
16	Tue		
17	Wed		
18	Thu		
19	Fri		
20	Sat		
21	Sun		
22	Mon		Wk 8
23	Tue		
24	Wed		
25	Thu		
26	Fri		
27	Sat		
28	Sun		

**February 2027**

wk	Mon	Tue	Wed	Thu	Fri	Sat	Sun
5	1	2	3	4	5	6	7
6	8	9	10	11	12	13	14
7	15	16	17	18	19	20	21
8	22	23	24	25	26	27	28

**January 2027**

wk	Mon	Tue	Wed	Thu	Fri	Sat	Sun
53					1	2	3
1	4	5	6	7	8	9	10
2	11	12	13	14	15	16	17
3	18	19	20	21	22	23	24
4	25	26	27	28	29	30	31

**March 2027**

wk	Mon	Tue	Wed	Thu	Fri	Sat	Sun
9	1	2	3	4	5	6	7
10	8	9	10	11	12	13	14
11	15	16	17	18	19	20	21
12	22	23	24	25	26	27	28
13	29	30	31				



## March 2027

1	Mon	St David's Day (Wales)	Wk 9
2	Tue		
3	Wed		
4	Thu		
5	Fri		
6	Sat		
7	Sun		
8	Mon		Wk 10
9	Tue		
10	Wed		
11	Thu		
12	Fri		
13	Sat		
14	Sun		
15	Mon		Wk 11
16	Tue		
17	Wed	St Patrick's Day (BH N Ireland/Eire)	
18	Thu		
19	Fri		
20	Sat		
21	Sun		
22	Mon		Wk 12
23	Tue		
24	Wed		
25	Thu		
26	Fri	Good Friday	
27	Sat		
28	Sun	British Summertime starts	
29	Mon	Easter Monday	Wk 13
30	Tue		
31	Wed		



### RUGGED SUNLIT RIDGE

The Roaches are a jagged gritstone escarpment offering superb views of North Staffordshire, Derbyshire and the distant Cheshire plain, part of the prominent steep rocky ridge on the western edge of the Peak District. Here the gritstone rocks and crags have been eroded into fascinating shapes and are popular with climbers. The fox, intelligent and very resourceful, is at home in this terrain. It is an opportunistic feeder with excellent hearing to allow it to hear small animals underground.

## March 2027

wk	Mon	Tue	Wed	Thu	Fri	Sat	Sun
9	1	2	3	4	5	6	7
10	8	9	10	11	12	13	14
11	15	16	17	18	19	20	21
12	22	23	24	25	26	27	28
13	29	30	31				

### February 2027

wk	Mon	Tue	Wed	Thu	Fri	Sat	Sun
5	1	2	3	4	5	6	7
6	8	9	10	11	12	13	14
7	15	16	17	18	19	20	21
8	22	23	24	25	26	27	28

### April 2027

wk	Mon	Tue	Wed	Thu	Fri	Sat	Sun
13				1	2	3	4
14	5	6	7	8	9	10	11
15	12	13	14	15	16	17	18
16	19	20	21	22	23	24	25
17	26	27	28	29	30		



**VIVID BLUEBELLS BELOW MOORLAND CREST**

**Bluebells below Roseberry Topping, Yorkshire and Roe Deer**  
 In spring, bluebells stand out in a dazzling array of colour on the slopes of Roseberry Topping in the Cleveland Hills. This distinctive conical outcrop owes its peculiar bent profile to a geological fault and a landslip caused by over-mining of minerals in the early 20th century. The pretty roe deer is Britain's smallest, most common native deer. Reddy-brown with a white rump, short antlers and no tail, they are mostly solitary, browsing the edges of woodland generally at dawn and dusk.

**April 2027**

1	Thu	
2	Fri	
3	Sat	
4	Sun	
5	Mon	Wk 14
6	Tue	
7	Wed	
8	Thu	
9	Fri	
10	Sat	
11	Sun	
12	Mon	Wk 15
13	Tue	
14	Wed	
15	Thu	
16	Fri	
17	Sat	
18	Sun	
19	Mon	Wk 16
20	Tue	
21	Wed	
22	Thu	
23	Fri	St George's Day (England)
24	Sat	
25	Sun	
26	Mon	Wk 17
27	Tue	
28	Wed	
29	Thu	
30	Fri	

**April 2027**

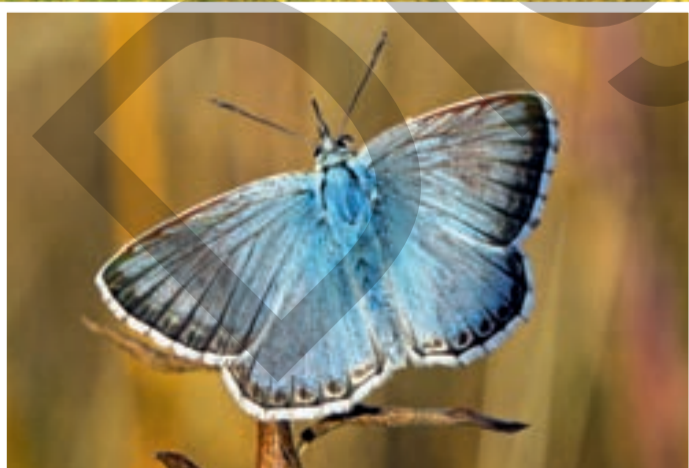
wk	Mon	Tue	Wed	Thu	Fri	Sat	Sun
13				1	2	3	4
14	5	6	7	8	9	10	11
15	12	13	14	15	16	17	18
16	19	20	21	22	23	24	25
17	26	27	28	29	30		

**March 2027**

wk	Mon	Tue	Wed	Thu	Fri	Sat	Sun
9	1	2	3	4	5	6	7
10	8	9	10	11	12	13	14
11	15	16	17	18	19	20	21
12	22	23	24	25	26	27	28
13	29	30	31				

**May 2027**

wk	Mon	Tue	Wed	Thu	Fri	Sat	Sun
17						1	2
18	3	4	5	6	7	8	9
19	10	11	12	13	14	15	16
20	17	18	19	20	21	22	23
21	24/31	25	26	27	28	29	30



**ANCIENT CHALK-CUT HORSE ON HILLSIDE**

Bratton Camp, Westbury, Wiltshire and Chalkhill Blue Butterfly  
 An Iron Age hillfort was built at Bratton Camp over 2,000 years ago. Overlooking the town of Westbury is the White Horse chalk hill figure, probably first cut in the late 17th century, a famous landmark, visible from afar. Today, the extensive chalk grassland supports herb and grass species that provide a habitat for a diverse range of insects, such as the chalkhill blue butterfly in summer. The blue males are most conspicuous as they fly around searching for the more secretive, brown females.

May 2027	
1	Sat
2	Sun
3	Mon <small>Bank Holiday Wk 18</small>
4	Tue
5	Wed
6	Thu
7	Fri
8	Sat
9	Sun
10	Mon <small>Wk 19</small>
11	Tue
12	Wed
13	Thu
14	Fri
15	Sat
16	Sun
17	Mon <small>Wk 20</small>
18	Tue
19	Wed
20	Thu
21	Fri
22	Sat
23	Sun
24	Mon <small>Wk 21</small>
25	Tue
26	Wed
27	Thu
28	Fri
29	Sat
30	Sun
31	Mon <small>Bank Holiday Wk 22</small>

# May 2027

wk	Mon	Tue	Wed	Thu	Fri	Sat	Sun
17						1	2
18	3	4	5	6	7	8	9
19	10	11	12	13	14	15	16
20	17	18	19	20	21	22	23
21	24/31	25	26	27	28	29	30

3 Bank Holiday 31 Bank Holiday

## April 2027

wk	Mon	Tue	Wed	Thu	Fri	Sat	Sun
13				1	2	3	4
14	5	6	7	8	9	10	11
15	12	13	14	15	16	17	18
16	19	20	21	22	23	24	25
17	26	27	28	29	30		

## June 2027

wk	Mon	Tue	Wed	Thu	Fri	Sat	Sun
22		1	2	3	4	5	6
23	7	8	9	10	11	12	13
24	14	15	16	17	18	19	20
25	21	22	23	24	25	26	27
26	28	29	30				



**COASTAL VISTA AND SMOOTH BOULDERS**  
**Porth Nanven, Cornwall and Grey Seal**

Smoothly contoured rocks washed by waves at sunset at Porth Nanven in the far west of Cornwall. This secluded cove is known as the 'Dinosaur Egg beach' because of the unusual egg-shaped granite boulders which cover the beach and foreshore, deposited by the sea. Grey seals can often be spotted here around the rocks and the base of the cliffs. These large, heavy seals spend much of their lives at sea, hunting for fish until the autumn, when they congregate on land to breed in large colonies.

June 2027	
1	Tue
2	Wed
3	Thu
4	Fri
5	Sat
6	Sun
7	Mon
8	Tue
9	Wed
10	Thu
11	Fri
12	Sat
13	Sun
14	Mon
15	Tue
16	Wed
17	Thu
18	Fri
19	Sat
20	Sun
21	Mon
22	Tue
23	Wed
24	Thu
25	Fri
26	Sat
27	Sun
28	Mon
29	Tue
30	Wed

# June 2027

wk	Mon	Tue	Wed	Thu	Fri	Sat	Sun
22		1	2	3	4	5	6
23	7	8	9	10	11	12	13
24	14	15	16	17	18	19	20
25	21	22	23	24	25	26	27
26	28	29	30				

## May 2027

wk	Mon	Tue	Wed	Thu	Fri	Sat	Sun
17						1	2
18	3	4	5	6	7	8	9
19	10	11	12	13	14	15	16
20	17	18	19	20	21	22	23
21	24 <sup>31</sup>	25	26	27	28	29	30

## July 2027

wk	Mon	Tue	Wed	Thu	Fri	Sat	Sun
26				1	2	3	4
27	5	6	7	8	9	10	11
28	12	13	14	15	16	17	18
29	19	20	21	22	23	24	25
30	26	27	28	29	30	31	



**VIBRANT UPLAND HEATHER AND GORSE**  
**Exmoor, Somerset and Smooth Snake**

Exmoor is a landscape of many contrasts: deep wooded valleys cutting through open moorland and steep coastal cliffs. The moors are covered with rough grasses, sedges, gorse and heather. Wild, shaggy-maned Exmoor ponies and red deer still roam freely. The rare smooth snake is found in a few places, often alongside the rare sand lizard which also favours the same sandy heathland habitat. As with other reptiles, smooth snakes bask in the sun during the day and hibernate from October to April.

**July 2027**

1	Thu	
2	Fri	
3	Sat	
4	Sun	
5	Mon	Wk 27
6	Tue	
7	Wed	
8	Thu	
9	Fri	
10	Sat	
11	Sun	
12	Mon	Bank Holiday (N Ireland) Wk 28
13	Tue	
14	Wed	
15	Thu	
16	Fri	
17	Sat	
18	Sun	
19	Mon	Wk 29
20	Tue	
21	Wed	
22	Thu	
23	Fri	
24	Sat	
25	Sun	
26	Mon	Wk 30
27	Tue	
28	Wed	
29	Thu	
30	Fri	
31	Sat	

**July 2027**

wk	Mon	Tue	Wed	Thu	Fri	Sat	Sun
26				1	2	3	4
27	5	6	7	8	9	10	11
28	12	13	14	15	16	17	18
29	19	20	21	22	23	24	25
30	26	27	28	29	30	31	

**June 2027**

wk	Mon	Tue	Wed	Thu	Fri	Sat	Sun
22		1	2	3	4	5	6
23	7	8	9	10	11	12	13
24	14	15	16	17	18	19	20
25	21	22	23	24	25	26	27
26	28	29	30				

**August 2027**

wk	Mon	Tue	Wed	Thu	Fri	Sat	Sun
30							1
31	2	3	4	5	6	7	8
32	9	10	11	12	13	14	15
33	16	17	18	19	20	21	22
34	23/30	24/31	25	26	27	28	29





**SECLUDED FENLAND WATERWAY**

**Wicken Fen, Cambridgeshire and Bittern**

Wicken Fen nature reserve supports a huge diversity of wildlife – around 8,020 species flourish in the rich peat soil of the Sedge Fen. There are several hides overlooking the Mere to view water birds. Native to southern Britain, the bittern, with its tawny mottled plumage, moves silently through the reed beds, on which it depends for survival.

When alarmed it stands frozen, upright, pointing its sharp bill upwards. In spring males make a loud booming, far-carrying call, like a foghorn.

**August 2027**

1	Sun	
2	Mon	Bank Holiday (Scotland & Eire) Wk 31
3	Tue	
4	Wed	
5	Thu	
6	Fri	
7	Sat	
8	Sun	
9	Mon	Wk 32
10	Tue	
11	Wed	
12	Thu	
13	Fri	
14	Sat	
15	Sun	
16	Mon	Wk 33
17	Tue	
18	Wed	
19	Thu	
20	Fri	
21	Sat	
22	Sun	
23	Mon	Wk 34
24	Tue	
25	Wed	
26	Thu	
27	Fri	
28	Sat	
29	Sun	
30	Mon	Bank Holiday (excl. Scotland) Wk 35
31	Tue	

**August 2027**

wk	Mon	Tue	Wed	Thu	Fri	Sat	Sun
30							1
31	2	3	4	5	6	7	8
32	9	10	11	12	13	14	15
33	16	17	18	19	20	21	22
34	23/30	24/31	25	26	27	28	29

**July 2027**

wk	Mon	Tue	Wed	Thu	Fri	Sat	Sun
26				1	2	3	4
27	5	6	7	8	9	10	11
28	12	13	14	15	16	17	18
29	19	20	21	22	23	24	25
30	26	27	28	29	30	31	

**September 2027**

wk	Mon	Tue	Wed	Thu	Fri	Sat	Sun
35			1	2	3	4	5
36	6	7	8	9	10	11	12
37	13	14	15	16	17	18	19
38	20	21	22	23	24	25	26
39	27	28	29	30			



**DRAMATIC RUGGED GORGE**

**Aberglaslyn Pass near Beddgelert, Snowdonia and Otter**

The River Glaslyn winds through the striking, rocky Aberglaslyn pass, narrowing until the river is hemmed in by steep wooded hillsides. From the path along one side of the ravine there are views of the river surging over huge boulders creating rapids and deep pools. Elusive otters, intelligent and curious, live in undisturbed rivers, streams and estuaries. Their agile, streamlined bodies help them run and swim rapidly, and they enjoy playing on the banks and chasing each other in the water.

**September 2027**

1	Wed	
2	Thu	
3	Fri	
4	Sat	
5	Sun	
6	Mon	Wk 36
7	Tue	
8	Wed	
9	Thu	
10	Fri	
11	Sat	
12	Sun	
13	Mon	Wk 37
14	Tue	
15	Wed	
16	Thu	
17	Fri	
18	Sat	
19	Sun	
20	Mon	Wk 38
21	Tue	
22	Wed	
23	Thu	
24	Fri	
25	Sat	
26	Sun	
27	Mon	Wk 39
28	Tue	
29	Wed	
30	Thu	

**September 2027**

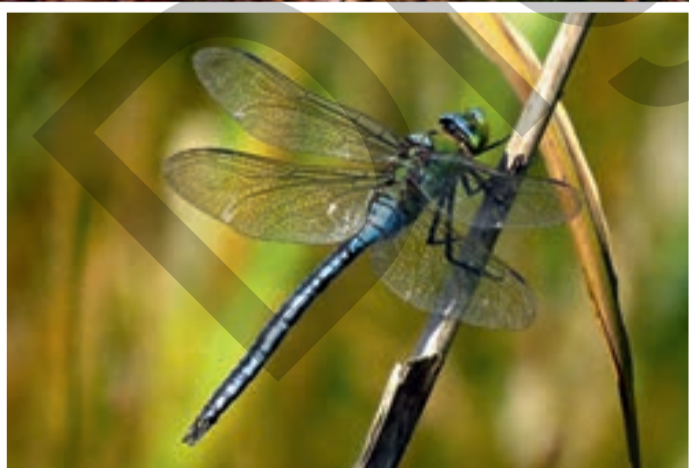
wk	Mon	Tue	Wed	Thu	Fri	Sat	Sun
35			1	2	3	4	5
36	6	7	8	9	10	11	12
37	13	14	15	16	17	18	19
38	20	21	22	23	24	25	26
39	27	28	29	30			

**August 2027**

wk	Mon	Tue	Wed	Thu	Fri	Sat	Sun
30							1
31	2	3	4	5	6	7	8
32	9	10	11	12	13	14	15
33	16	17	18	19	20	21	22
34	23 <sub>/30</sub>	24 <sub>/31</sub>	25	26	27	28	29

**October 2027**

wk	Mon	Tue	Wed	Thu	Fri	Sat	Sun
39					1	2	3
40	4	5	6	7	8	9	10
41	11	12	13	14	15	16	17
42	18	19	20	21	22	23	24
43	25	26	27	28	29	30	31



**VIBRANT AUTUMN WOODLAND SHADES**

**Beech Woods, New Forest, Hampshire and Emperor Dragonfly**  
 Trees and branches in the New Forest are lit up by the autumn sun. Vast tracts of woodland, heathland and river valleys characterise the varied landscape of the New Forest where deer, ponies and cattle roam freely. This ancient woodland has remained largely unchanged ever since it was William the Conqueror's royal hunting ground. The emperor dragonfly is a very large, impressive dragonfly. It is a common species of large ponds, rivers and lakes. The female lays her eggs in floating pondweed.

October 2027	
1	Fri
2	Sat
3	Sun
4	Mon <span style="float: right;">Wk 40</span>
5	Tue
6	Wed
7	Thu
8	Fri
9	Sat
10	Sun
11	Mon <span style="float: right;">Wk 41</span>
12	Tue
13	Wed
14	Thu
15	Fri
16	Sat
17	Sun
18	Mon <span style="float: right;">Wk 42</span>
19	Tue
20	Wed
21	Thu
22	Fri
23	Sat
24	Sun
25	Mon <span style="float: right;">Bank Holiday (Eire) Wk 43</span>
26	Tue
27	Wed
28	Thu
29	Fri
30	Sat
31	Sun <span style="float: right;">British Summertime ends</span>

# October 2027

wk	Mon	Tue	Wed	Thu	Fri	Sat	Sun
39					1	2	3
40	4	5	6	7	8	9	10
41	11	12	13	14	15	16	17
42	18	19	20	21	22	23	24
43	25	26	27	28	29	30	31

## September 2027

wk	Mon	Tue	Wed	Thu	Fri	Sat	Sun
35			1	2	3	4	5
36	6	7	8	9	10	11	12
37	13	14	15	16	17	18	19
38	20	21	22	23	24	25	26
39	27	28	29	30			

## November 2027

wk	Mon	Tue	Wed	Thu	Fri	Sat	Sun
44	1	2	3	4	5	6	7
45	8	9	10	11	12	13	14
46	15	16	17	18	19	20	21
47	22	23	24	25	26	27	28
48	29	30					



**ROCKPOOLS AND ICONIC LIGHTHOUSE**  
**St Mary's Lighthouse, Tyne and Wear and Shore Crab**  
 The white lighthouse on St Mary's Island, a small tidal island, was built in 1898 and operated until 1984. The surrounding nature reserve is a rich wildlife habitat including rockpools, clifftop grassland and sweeping, sandy beaches backed by dunes. The shore crab is the most common crab on UK shores. Normally a greenish colour, but often yellowish-orange or red, shore crabs are found in rockpools and shallow waters. They will eat anything – seaweed, mussels, barnacles and even smaller crabs.

November 2027	
1	Mon <span style="float:right">Wk 44</span>
2	Tue
3	Wed
4	Thu
5	Fri
6	Sat
7	Sun
8	Mon <span style="float:right">Wk 45</span>
9	Tue
10	Wed
11	Thu
12	Fri
13	Sat
14	Sun
15	Mon <span style="float:right">Wk 46</span>
16	Tue
17	Wed
18	Thu
19	Fri
20	Sat
21	Sun
22	Mon <span style="float:right">Wk 47</span>
23	Tue
24	Wed
25	Thu
26	Fri
27	Sat
28	Sun
29	Mon <span style="float:right">Wk 48</span>
30	Tue <span style="float:right">St Andrew's Day (Scotland)</span>

## November 2027

wk	Mon	Tue	Wed	Thu	Fri	Sat	Sun
44	1	2	3	4	5	6	7
45	8	9	10	11	12	13	14
46	15	16	17	18	19	20	21
47	22	23	24	25	26	27	28
48	29	30					

### October 2027

wk	Mon	Tue	Wed	Thu	Fri	Sat	Sun
39					1	2	3
40	4	5	6	7	8	9	10
41	11	12	13	14	15	16	17
42	18	19	20	21	22	23	24
43	25	26	27	28	29	30	31

### December 2027

wk	Mon	Tue	Wed	Thu	Fri	Sat	Sun
48			1	2	3	4	5
49	6	7	8	9	10	11	12
50	13	14	15	16	17	18	19
51	20	21	22	23	24	25	26
52	27	28	29	30	31		



**GLISTENING SNOWY MOORLAND**

**Rannoch Moor, Highland and Capercaillie**

Deep snow covers this vast, treeless plateau of peat bog, lochans, burns and huge boulders in winter. On the edge of the moor is Buachaille Etive Mòr, with its triangular peak, guarding the entrance to Glen Coe. The many small lochs with tiny islands are home to rare wetland birds and the rare capercaillie. Britain's largest grouse species breeds in Scottish native pinewood. Males are about twice the size of females, have glossy black feathers and fan out their tails in a courtship display.

**December 2027**

1	Wed	
2	Thu	
3	Fri	
4	Sat	
5	Sun	
6	Mon	Wk 49
7	Tue	
8	Wed	
9	Thu	
10	Fri	
11	Sat	
12	Sun	
13	Mon	Wk 50
14	Tue	
15	Wed	
16	Thu	
17	Fri	
18	Sat	
19	Sun	
20	Mon	Wk 51
21	Tue	
22	Wed	Shortest Day
23	Thu	
24	Fri	
25	Sat	Christmas Day
26	Sun	Boxing Day
27	Mon	Bank Holiday Wk 52
28	Tue	Bank Holiday
29	Wed	
30	Thu	
31	Fri	

**December 2027**

wk	Mon	Tue	Wed	Thu	Fri	Sat	Sun
48			1	2	3	4	5
49	6	7	8	9	10	11	12
50	13	14	15	16	17	18	19
51	20	21	22	23	24	25	26
52	27	28	29	30	31		

**November 2027**

wk	Mon	Tue	Wed	Thu	Fri	Sat	Sun
44	1	2	3	4	5	6	7
45	8	9	10	11	12	13	14
46	15	16	17	18	19	20	21
47	22	23	24	25	26	27	28
48	29	30					

**January 2028**

wk	Mon	Tue	Wed	Thu	Fri	Sat	Sun
52						1	2
1	3	4	5	6	7	8	9
2	10	11	12	13	14	15	16
3	17	18	19	20	21	22	23
4	24/31	25	26	27	28	29	30